



Photo: davidbirri photography



HOTEL AND NATURE RESORT HANDECK  
3864 Guttannen



HISTORIC ALPINE HOTEL GRIMSEL HOSPIZ  
3864 Guttannen

[www.grimselwelt.ch](http://www.grimselwelt.ch) | [events@grimselwelt.ch](mailto:events@grimselwelt.ch) | +41 33 982 26 14

m  
e  
e  
t  
i  
n  
g



Photo: davidbirri photography

Dear event organisers

The Grimselwelt – where pioneers once worked with determination and went down in the annals of history in Swiss hydropower – is a place where this spirit, inspiration and desire are all still felt today. This is where energies flow.

The magic of the Grimselwelt can give a real lift. With the fresh mountain air come fresh ideas. Effective seminars are possible here away from the hustle and bustle of the city.

We would be happy to put together a personal supporting program for your trip to the Grimselwelt. Reaching from different railways to guided tours through the twisting underground labyrinth at the Oberhasli power plants or exploring a crystal grotto that is millions of years old. Everything organized by a single source.

Are you planning a workshop, a seminar or do you need a venue for a meeting?

The Grimsel Hospiz and the Nature Resort Handeck are the perfect places for coming together, developing strategies and making plans.

We are pleased to be considered as a suitable location for your upcoming event.

Markus Meier  
Hotel manager Grimselhotels

Annika Siegenthaler  
Head of banquet and events



## HOTEL AND NATURE RESORT HANDECK



Photo: davidbirri photography

### General information

|         |   |  |
|---------|---|--|
| Address | Hotel location:<br>Hotel und Naturresort Handeck<br>Am Grimselfpass<br>3864 Guttannen   | Postal address:<br>Kraftwerke Oberhasli AG / Grimselhotels<br>Grimselfstrasse 19<br>3862 Innertkirchen |
| Travel  | <b>By car</b><br>If travelling from Bern or Lucerne, head towards Meiringen and further on to Innertkirchen. Then follow the signs for Grimsel Pass. Once you reach Guttannen, the hotel is around a 15-minute drive further down the road on the right-hand side.<br><br>If travelling from Valais, you can reach us via Gletsch in Oberwald, further along the pass road up to the Grimsel Pass. Then drive around 20 minutes down towards Innertkirchen. The hotel is on the left-hand side of the road, opposite the popular Gelmerbahn.<br><br><b>By public transport</b><br>If you are travelling by public transport, you can reach us by PostBus from Innertkirchen and Oberwald. The PostBus stop "Handegg, Gelmerbahn" is close by. Please check the current timetable before travelling. |  |
| Season  | Beginning of June until end of October  |  |
| Contact | Feel free to contact us if you have any questions or are unsure about anything. Please contact us in advance to arrange a tour.<br><br>We would be happy to answer your phone or email enquiries.<br>+41 (0)33 982 26 14                      events@grimselwelt.ch   |  |

## Overnight stay

The three-star superior Hotel and Nature Resort Handeck with its stylish rooms in the main building, the stone house and chalet is an oasis of calm and well-being, not to mention an ideal family resort with a close connection to the local alpine economy.

Our offer:

- overnight stay in a cozy room with shower/toilet, radio-TV and telephone
- generous breakfast buffet from 7.30 a.m. until 10 a.m.
- entry to our cozy well-being facility
- use of our heated swimming pool with Jacuzzi and counter current system
- use of the LOWA-testing-center with walking shoes for children and adults
- free Wi-Fi
- services and VAT, exclusive taxes

|  |          |        |
|--|----------|--------|
| Price per person in a double room, chalet or main building | from CHF | 78.00  |
| Price per person in a double room, stone house             | from CHF | 108.00 |
| Price per person in a single room, main building           | from CHF | 108.00 |
| Supplement for a double room for single use                | CHF      | 60.00  |

These seminar prices are valid for a minimum of 10 participants and can only be booked in combination with the conference package and at least three of the building blocks. On weekends (Friday and Saturday) and during high season as well for groups of less than 10 people, the regular overnight rates apply.

## Hotel rooms

The hotel is equipped with 39 hotel rooms and offers a capacity for a maximum of 85 people. The room categories are divided into the main building, the chalet and the stone house.

### in the main building

- 2 single rooms with shower/toilet, radio-TV and telephone
- 4 family rooms with double and bunked bed, shower/toilet, radio-TV and telephone
- 13 double rooms with shower/toilet, radio-TV and telephone

### in the chalet

- 6 double rooms with shower/toilet, radio-TV and telephone
- 2 double rooms with grandlit sized beds, private shower/toilet on the floor, radio-TV and telephone

### in the stone house

- 12 double rooms with shower/toilet, radio-TV and telephone



Photo: The Photostudio



Photo: The Photostudio



Photo: Cramarts by Marc Lüthi

## Kitchen philosophy

Roman Crkon's field, forest and meadow cuisine is a real labour of love! With 15 Gault Millau points, his kitchen is a feast for all the senses. Here, he offers guests a genuine and authentic culinary experience.

## Exclusivity - Rent a hotel

Are you interested in an exclusive rental of the Hotel and Nature Resort Handeck? Please contact us so that we can show you the various possibilities.



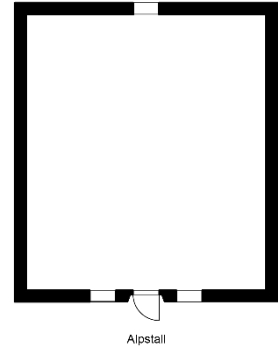
## Meeting rooms

### Alpstall

An alpine stable like no other! The Alpstall is the perfect location for a creative workshop or for planning new strategies. Take inspiration from the rustic surroundings and recharge your batteries right on the doorstep in our alpine garden and herb garden.



Photo: davidbirri photography



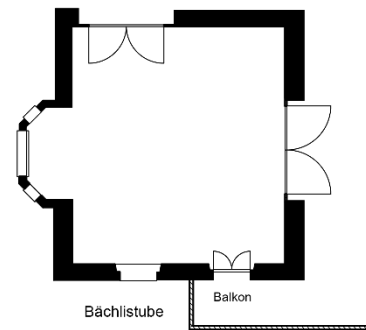
| height | wide | length | m2 | block seating | U-shaped seating | seminar seating | cinema seating |
|--------|------|--------|----|---------------|------------------|-----------------|----------------|
| 2.3    | 7.8  | 6.4    | 50 | 16            | -                | -               | 30             |

### Bächlistube

Our Bächlistube has already hosted a number of successful negotiations and meetings. The room is flooded with daylight through the many windows, making it the perfect place to make your plans in peace.



Photo: Cramarts by Marc Lüthi



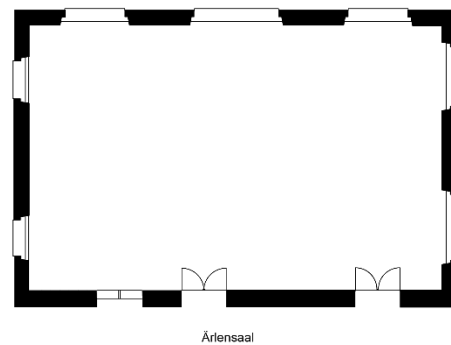
| height | wide | length | m2 | block seating | U-shaped seating | seminar seating | cinema seating |
|--------|------|--------|----|---------------|------------------|-----------------|----------------|
| 2.8    | 5.7  | 6.4    | 37 | 16            | 16               | 20              | 25             |

### Ärtenaal

The Ärtenaal is our largest room. The hall is available for seminars, workshops or meetings with more than 25 people.



Photo: Grimselhotels



| height | wide | length | m2  | block seating | U-shaped seating | seminar seating | cinema seating |
|--------|------|--------|-----|---------------|------------------|-----------------|----------------|
| 2.8    | 8.0  | 13.7   | 111 | 28            | 34               | 50              | 80             |

## HISTORIC ALPINE HOTEL GRIMSEL HOSPIZ



Photo: davidbirri photography

### General information

|         |   |   |
|---------|---|---|
| Address | Hotel location:<br>Historisches Alpinhotel Grimsel Hospiz<br>Am Grimselpass<br>3864 Guttannen   | Postal address:<br>Kraftwerke Oberhasli AG / Grimselhotels<br>Grimselstrasse 19<br>3862 Innertkirchen |
| Travel  | <b>By car</b><br>When travelling from Bern or Lucerne, head towards Meiringen and further on to Innertkirchen. Then follow the pass road until just below Grimsel Pass. Cross the Seeuferegg dam on your right and drive the last stretch of road up to Grimselnollen.<br><br>If travelling from Valais, you can reach us via Gletsch in Oberwald, all the way along the pass road up to the Grimsel Pass. Then drive around 5 minutes further towards Innertkirchen. Cross the Seeuferegg dam on your left and drive the last stretch of road up to Grimselnollen.<br><br><b>By public transport</b><br>If you are travelling by public transport, you can reach us by PostBus from Innertkirchen and Oberwald. The PostBus stop "Grimsel Hospiz" is right outside our entrance. Please check the current timetable before travelling. |   |
| Season  | Beginning of June until end of October  |   |
| Contact | Feel free to contact us if you have any questions or are unsure about anything. Please contact us in advance to arrange a tour.<br><br>We would be happy to answer your phone or email enquiries.<br>+41 (0)33 982 26 14                      events@grimselwelt.ch   |   |

## Overnight stay

The historic four-star alpine hotel sits majestically above Lake Grimsel. Behind a homely façade of rough broken granite and red shutters, you will find an interior that leaves nothing to be desired.

Our offer:

- overnight stay in a cozy room with shower/toilet, radio-TV and telephone
- generous breakfast buffet from 7.30 a.m. until 10 a.m.
- free Wi-Fi
- services and VAT, exclusive taxes

|  |          |        |
|--|----------|--------|
| Price per person in a double room, mountain view | from CHF | 78.00  |
| Price per person in a double room, lake view     | from CHF | 108.00 |
| Price per person in a single room, mountain view | from CHF | 108.00 |
| Supplement for a double room for single use      | CHF      | 60.00  |

These seminar prices are valid for a minimum of 10 participants and can only be booked in combination with the conference package and at least three of the building blocks. On weekends (Friday and Saturday) and during high season as well for groups of less than 10 people, the regular overnight rates apply.

## Hotel rooms

The hotel provides 28 rooms, designed tastefully and inspired by the 1930s. All rooms offer an impressive view of the surrounding mountains.

- 2 single rooms with mountain view, shower/toilet, radio-TV and telephone
- 7 double rooms with lake view, shower/toilet, radio-TV and telephone
- 19 double rooms with mountain view, shower/toilet, radio-TV and telephone



Photo: The Photostudio



Photo: davidbirri photography



Photo: davidbirri photography

## Kitchen philosophy

The kitchen philosophy is in line with the hotel – high quality, genuine and authentic. At the Historic Alpine Hotel Grimsel Hospiz, meals are prepared with love and dedication to details. Everything is made with genuine craftsmanship. Regional products are presented at their best and refined with flavours from the wide world of culinary arts.

## Exclusivity - Rent a hotel

Are you interested in an exclusive rental of the Historic Alpine Hotel Grimsel Hospiz?  
Do not hesitate to contact us.



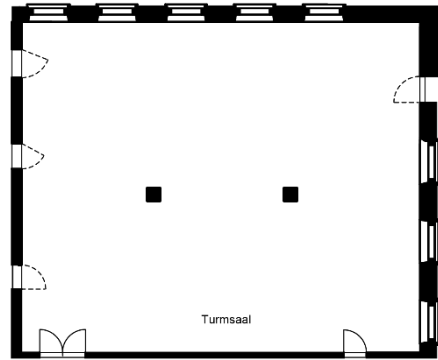
## Meeting rooms

### Turmsaal

Whether a seminar, written examination or workshop, the Turmsaal is the perfect place for hosting your event.



Photo: davidbirri photography



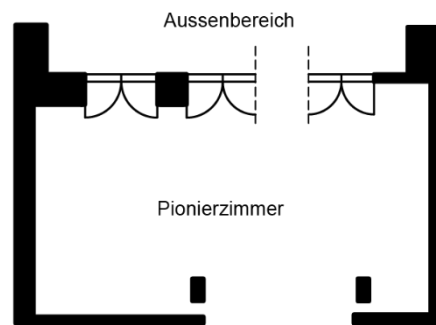
| height | wide | length | m2  | block seating | U-shaped seating | seminar seating | cinema seating |
|--------|------|--------|-----|---------------|------------------|-----------------|----------------|
| 2.7    | 11.9 | 14.2   | 170 | 48            | 36               | 30              | 150            |

### Pionierzimmer

The Pionierzimmer is ideal for face-to-face discussions, small-scale meetings or additional group work.



Photo: davidbirri photography



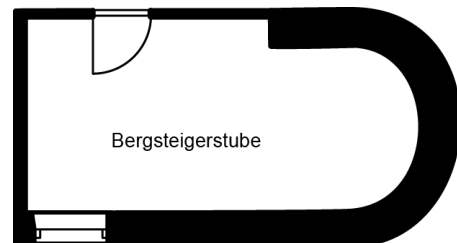
| height | wide | length | m2 | block seating | U-shaped seating | seminar seating | cinema seating |
|--------|------|--------|----|---------------|------------------|-----------------|----------------|
| 2.3    | 3.4  | 8.4    | 29 | 12            | -                | -               | -              |

### Bergsteigerstübli

The Bergsteigerstübli can be used for short discussions or as an additional room for group work for max. 12 guests.



Photo: The Photostudio



| height | wide | length | m2 | block seating | U-shaped seating | seminar seating | cinema seating |
|--------|------|--------|----|---------------|------------------|-----------------|----------------|
| 2.5    | 3.0  | 7.0    | 21 | 12            | -                | -               | -              |



## CONFERENCE PACKAGE

The daily flat rate is charged as the basis for your seminar day. The flat rate includes the following:

- room rental for the plenary
- technical equipment
  - projector and screen or TV
  - pin board, flip chart and presenter's case
  - free Wi-Fi
  - notepad and ballpoint pen
- Grimsel water (sparkling and non-sparkling)
- fruit basket and cereal bars

Price per person CHF 35.00

For less than 10 participants we charge an additional fee of CHF 5.00 per person and per day.

## BUILDING BLOCKS FOR YOUR CONFERENCE PACKAGE

You can add the following components to the conference package to customise your meeting.

### Welcome coffee

Would you like a welcome coffee at your arrival?

- coffee, espresso and variation of fruit and herb teas
- Grimsel water (sparkling and non-sparkling)
- croissants (1 piece per person)

Price per person CHF 8.50

### Coffee break

For a refreshment in between, we recommend our coffee break served with small snacks.

- coffee, espresso and variation of fruit and herb teas
- various fruit juices
- Grimsel water (sparkling and non-sparkling)
- sweet or salty appetizers

Price per person CHF 15.00

### Business lunch

At lunchtime, we serve a 3-course business lunch, a seasonal creation from our kitchen:

Price per person CHF 47.00

### Gourmet menu

Let us spoil you with our 4-, 5- or 6-course gourmet menu for dinner.

Price per person for 4-course CHF 85.00

Price per person for 5-course CHF 93.00

Price per person for 6-course CHF 105.00

Upon request, we will recommend a delicious aperitif.



Photo: Cramarts by Marc Lüthi

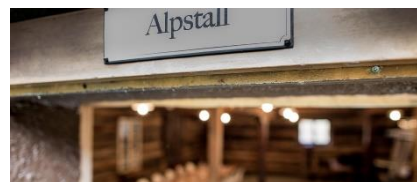


Photo: davidbirri photography



Photo: Cramarts by Marc Lüthi



Photo: The Photostudio



Photo: Cramarts by Marc Lüthi



Photo: davidbirri photography

## INFORMATION ABOUT CONSTRUCTIONS SPITALLAMM DAM

By 2025, a once-in-a-century structure will have been built in front of the Grimsel Hospiz Alpine Hotel. A new, replacement dam wall is to be built in front of the existing Spitalamm dam wall with a view to managing Lake Grimsel for another 100 years. It represents a significant investment and will help ensure a reliable energy supply for Switzerland. A construction project in the mountains – almost 2,000 m above sea level and on this scale – is a very challenging proposition and asks a great deal of those working on it. The free and informative site tour gives you an opportunity to inspect the construction activity at close hand.

The construction work involved is scheduled for the same period each year, namely spring to late autumn, and is associated with noise emissions both day and night (a shift system is in operation). We are aware that our major construction project has an impact on the running of the hotel and on our guests during the summer season. Together with our hotel team, we put our heart and soul into making sure you enjoy your stay with us and thank you for your understanding!

## SUPPORTING PROGRAMME AT GRIMSELWELT

The Grimselwelt – known as Switzerland's reservoir – offers countless possibilities for excursions.

Eternal ice is a fascinating prospect for young and old alike. The paths where tradesmen used to carry their goods are now perfect for long hikes. On the Gelmerbahn, you can experience a dizzying gradient of 106 per cent. And we are also on hand to tell you everything there is to know on the topic of electricity, travelling through the twisting underground labyrinth at the Oberhasli power plants and exploring a crystal grotto that is millions of years old.

We would be happy to put together a personal programme for your trip to the Grimselwelt – please get in touch with us. The programme and detailed booking documents will be sent to you directly.

Additional information about the offers and other activities can be found on our website [www.grimsewelt.ch](http://www.grimsewelt.ch).



Photo: davidbirri photography

## CONDITIONS

Please note that our general terms and conditions are an integrated part of all our offers and confirmations.

(Edit: January 2024)





WE LOOK FORWARD TO SEEING YOU!

GRIMSELWELT  
Grimselstrasse 19  
CH-3862 Innertkirchen  
welcome@grimselwelt.ch  
www.grimselwelt.ch

GRIMSELHOTELS  
hotels@grimselwelt.ch

Handeck  
Hotel und Naturresort  
CH-3864 Guttannen  
Tel +41 33 982 36 11

Grimsel Hospiz  
Historisches Alpinhotel  
CH-3864 Guttannen  
Tel +41 33 982 46 11

Oberaar  
Restaurant und Berghaus  
CH-3864 Guttannen  
Tel +41 33 982 48 11

Bäregg  
Ferien- und Alpinhütte  
CH-3864 Guttannen  
Tel +41 33 982 36 11

