

Photo: Nicolas Glauser



HISTORIC ALPINE HOTEL GRIMSEL HOSPIZ  
3864 Guttannen

[www.grimselwelt.ch](http://www.grimselwelt.ch) | [events@grimselwelt.ch](mailto:events@grimselwelt.ch) | +41 33 982 26 14

---

e  
v  
e  
n  
t  
s  
winter



Photo: davidbirri photography

Dear event organisers

Winter at the Grimsel Hospiz is all about winding down and relaxing. Nestled deep in the snow, the historic building is a treasure in these unspoilt natural surroundings. Guests can already leave behind the stresses and strains of everyday life during their unique journey to the hotel – from an aerial cableway trip to driving through deep tunnels.

The hotel features a welcoming atmosphere, with a crackling fireplace and steaming hot tub under a magnificent starry sky awaiting guests.

The winter oasis in the Historic Grimsel Hospiz offers the ideal backdrop for your upcoming event in unique surroundings. There is no better place for a cosy celebration whether for a private or a business event.

We are pleased to be considered as a suitable location for your upcoming event.

Markus Meier  
Hotel manager Grimselhotels

Annika Siegenthaler  
Head of banquet and events

## HISTORIC ALPINE HOTEL GRIMSEL HOSPIZ



Photo: davidbirri photography

### General information

Address	Hotel location: Historisches Alpinhotel Grimsel Hospiz Am Grimselpass 3864 Guttannen	Meeting point and postal address: Kraftwerke Oberhasli AG / Grimselhotels Grimselstrasse 19 3862 Innertkirchen
Travel	<b>By car</b> If travelling from Bern or Lucerne, head towards Meiringen and further on to Innertkirchen. Head to the main building of Kraftwerke Oberhasli AG. Parking spaces are available on site.  <b>By public transport</b> If travelling by public transport, take the train to Meiringen. Continue with the Meiringen-Innertkirchen-Bahn to the Innertkirchen Kraftwerk (Bahn) terminus. Finally, a short walk to the main building of Kraftwerke Oberhasli AG.  From Innertkirchen, the journey continues in groups accompanied by a visitor guide by PostBus, cable car and underground through the power station tunnel up to the winter oasis.	
Season	Beginning of January until to the end of March.	
Notice	Please note the section winter operation in our general terms and conditions.	
Contact	Feel free to contact us if you have any questions or are unsure about anything. Please contact us in advance to arrange a tour.  We'd be happy to answer your phone or email enquiries. +41 (0)33 982 26 14 <a href="mailto:events@grimselwelt.ch">events@grimselwelt.ch</a>	

## Overnight stay

The historic four-star alpine hotel sits majestically above the frozen Lake Grimsel. Behind a homely façade of rough broken granite and red shutters, you will find an interior that leaves nothing to be desired.

Our offer:

- overnight stay in a cozy room with shower/toilet, radio-TV and telephone
- generous breakfast buffet from 8.00 a.m. until 11 a.m.
- coffee and cake in the afternoon
- use of our hot tub & sauna
- use of the LOWA-testing-center with winter shoes
- free Wi-Fi
- services and VAT, exclusive taxes

Price per person in a double room, mountain view	from CHF 189.00
Price per person in a double room, lake view	from CHF 219.00
Price per person in a single room, mountain view	from CHF 214.00
Supplement for a double room for single use	CHF 60.00
Transportation flat rate per person	CHF 74.00

These prices are valid for a minimum of 10 participants and can only be booked in combination with dinner. On weekends (Friday and Saturday), during Christmas and New Year as well as for groups of less than 10 people, the regular overnight rates apply.

## Hotel rooms

The hotel provides 28 rooms, designed tastefully and inspired by the 1930s. Almost all rooms offer an impressive view of the surrounding mountains.

- 2 single rooms with mountain view, shower/toilet, radio-TV and telephone
- 7 double rooms with lake view, shower/toilet, radio-TV and telephone
- 15 double rooms with mountain view, shower/toilet, radio-TV and telephone
- 4 double rooms "cinema" (no daylight), shower/toilet, radio-TV and telephone



Photo: Patrizio di Renzo



Photo: The Photostudio



Photo: davidbirri photography

## Kitchen philosophy

Roman Crkon's field, forest and meadow cuisine is a real labour of love! With 15 Gault Millau points, his kitchen is a feast for all the senses. Here, he offers guests a genuine and authentic culinary experience.

Let us know what sort of menu you have in mind. Our chef will put together a fantastic menu that suits you and your needs.

## Exclusivity - Rent a hotel

Are you interested in an exclusive rental of the Historic Alpine Hotel Grimsel Hospiz? Do not hesitate to contact us.

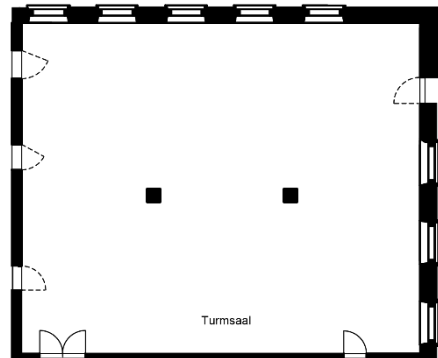
## Banquet rooms

### Turmsaal

The perfect hall for virtually every event. The Turmsaal is ideally suited to banqueting or for festive celebrations.



Photo: davidbirri photography



height	wide	length	m2	banquet
2.7	11.9	14.2	170	120

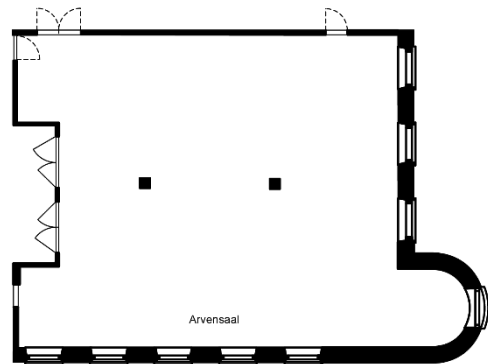
round	aperitif (standing)
-	200

### Arvensaal

The authentic Arvensaal with its cosy fireplace is a perfect setting for lively celebrations, drinks and dining in private or as part of an event.



Photo: The Photostudio



height	wide	length	m2	banquet
2.7	12.0	14.2	172	80

round	aperitif (standing)
-	200

### Felsenkeller – wine cellar

The doors to our wine cellar are always open on request, whether for business drinks, an exclusive wine tasting or a small-scale celebration in special surroundings.



Photo: The Photostudio



height	wide	length	m2	banquet
2.0	3.3	16.3	55	-

round	aperitif (standing)
-	60

## ADVENTUROUS ARRIVAL AND DEPARTURE

In winter, your arrival at Grimsel Hospiz is that little bit out of the ordinary. Switzerland's most remote four-star hotel is only accessible when accompanied by one of our personal guides.



We meet at the arranged time at the headquarters of Kraftwerke Oberhasli AG in Innertkirchen, before setting off together on the trip up to the Grimsel Hospiz.

Your trip with the PostBus from Innertkirchen to the Handeck power plants is organised and reserved for you. The journey continues via aerial cableway to Gerstenegg, then underground through the tunnel leading to the Grimsel 1 power plant. The Hospizbahn then takes you on the final bit up to your destination, the Grimsel Hospiz.

Here, a world far away from the hustle and bustle of everyday life awaits you.

We recommend sturdy footwear, winter clothing and light luggage for your arrival and departure. The path is not accessible by wheelchair or to the disabled. Do not forget your swimsuit for a dip in our wooden hot tub and sun cream for when the sun shines here in the Grimselwelt.



Photo: Nicolas Glauser

## WILDLIFE RESERVE

The Grimsel Hospiz is located in a wildlife reserve and is not suitable as a stop on a ski tour. This oasis of calm for both man and animal should be maintained. For safety reasons, the marked perimeter on the Nollen rock spur at Grimsel Hospiz should not be crossed.

In order to protect the wildlife, winter sports equipment is not transported on the railways leading to Grimsel Hospiz. It is also not permitted at the hotel.

## SUPPORTING PROGRAM IN THE WINTER OASIS

At the winter oasis, the only option is to relax and kick back in exclusive surroundings.

Eternal ice is a fascinating prospect for young and old alike. Enjoy a short hike in the alpine mountain landscape, through the depths of winter or we are also on hand to tell you everything there is to know on the topic of electricity, travelling through the twisting underground labyrinth at the Oberhasli power plants and exploring a crystal grotto that is millions of years old.

### Winter hiking trail

The winter hiking trail is the perfect way of exploring the fairytale winter landscape on snow shoes. The shortest winter hiking trail in the Bernese Oberland runs once around the hotel. The clearly signposted hiking trail then leads upwards into the high-alpine area. Here in the wildlife reserve, it is immediately clear why this area is under special protection.

### Power plant tour

The Grimselwelt's power plants are power plants you can get close to. Deep inside the mountains, everything is all action. The turbines at the power plants at Kraftwerke Oberhasli AG run at full power – year in, year out. Experience the energy hidden in the granite and check out the fascinating crystal grotto.

We would be happy to put together a personal programme for your trip to the Grimselwelt – please get in touch with us. The programme and detailed booking documents will be sent to you directly.

Additional information about our offers and activities can be found on our website [www.grimselwelt.ch](http://www.grimselwelt.ch).



Photo: Nicolas Glauser

## CONDITIONS

Please note that our general terms and conditions are an integrated part of all our offers and confirmations.



WE LOOK FORWARD TO SEEING YOU!

**GRIMSELWELT**

Grimselstrasse 19  
CH-3862 Innertkirchen  
welcome@grimselwelt.ch  
www.grimselwelt.ch

**GRIMSELHOTELS**

hotels@grimselwelt.ch  
events@grimselwelt.ch

**Handeck**

Hotel und Naturresort  
CH-3864 Guttannen  
Tel +41 33 982 36 11

**Grimsel Hospiz**

Historisches Alpinhotel  
CH-3864 Guttannen  
Tel +41 33 982 46 11

**Oberaar**

Restaurant und Berghaus  
CH-3864 Guttannen  
Tel +41 33 982 48 11

**Bäregg**

Ferien- und Alpinhütte  
CH-3864 Guttannen  
Tel +41 33 982 36 11

