



Photo: davidbirri photography



HOTEL AND NATURE RESORT HANDECK
3864 Guttannen



HISTORIC ALPINE HOTEL GRIMSEL HOSPIZ
3864 Guttannen

www.grimsewelt.ch | events@grimsewelt.ch | +41 33 982 26 14

e
v
e
n
t
s



Photo: Marco Kern

Dear event organisers

In the Grimselwelt, the symbiosis between nature and technology has left its mark on the landscape. This area offers many unique and fantastic things to do, from high-adrenaline mountain activities to relaxing spots by the river, and from gourmet delicacies to hearty farm shops. And right in the middle of it all, the Grimselhotels warmly welcome you.

Are you looking for a suitable venue for your event?

The Grimsel Hospiz as well as our Nature Resort Handeck offers the ideal backdrop for lively celebrations in unique surroundings. Groups of all sizes – whether private or business – appreciate the laid-back, tasteful style that is typical for the Grimsel region.

We are pleased to be considered as a suitable location for your upcoming event.

Markus Meier
Hotel manager Grimselhotels

Annika Siegenthaler
Head of banquet and events

HOTEL AND NATURE RESORT HANDECK



Photo: davidbirri photography

General information

Address	Hotel location:	Postal address:
	Hotel und Naturresort Handeck Am Grimselpass 3864 Guttannen	Kraftwerke Oberhasli AG / Grimselhotels Grimselstrasse 19 3862 Innertkirchen
Travel	By car If travelling from Bern or Lucerne, head towards Meiringen and further on to Innertkirchen. Then follow the signs for Grimsel Pass. Once you reach Guttannen, the hotel is around a 15-minute drive further down the road on the right-hand side. If travelling from Valais, you can reach us via Gletsch in Oberwald, further along the pass road up to the Grimsel Pass. Then drive around 20 minutes down towards Innertkirchen. The hotel is on the left-hand side of the road, opposite the popular Gelmerbahn.	
	By public transport If you are travelling by public transport, you can reach us by PostBus from Innertkirchen and Oberwald. The PostBus stop "Handegg, Gelmerbahn" is close by. Please check the current timetable before travelling.	
Season	Beginning of June until end of October	
Contact	Feel free to contact us if you have any questions or are unsure about anything. Please contact us in advance to arrange a tour.	
	We would be happy to answer your phone or email enquiries. +41 (0)33 982 26 14 events@grimselwelt.ch	

Overnight stay

The three-star superior Hotel and Nature Resort Handeck with its stylish rooms in the main building, the stone house and chalet is an oasis of calm and well-being, not to mention an ideal family resort with a close connection to the local alpine economy.

Our offer:

- overnight stay in a cozy room with shower/toilet, radio-TV and telephone
- generous breakfast buffet from 7.30 a.m. until 10 a.m.
- entry to our cozy well-being facility
- use of our heated swimming pool with Jacuzzi and counter current system
- use of our children climbing garden with climbing equipment and climbing shoes
- use of the LOWA-testing-center with walking shoes for children and adults
- free Wi-Fi
- services and VAT, exclusive taxes

Price per person in a double room, chalet or main building	from CHF 112.00
Price per person in a double room, stone house	from CHF 142.00
Price per person in a single room, main building	from CHF 142.00
Supplement for a double room for single use	CHF 60.00

These prices are valid for a minimum of 10 participants and can only be booked in combination with dinner. On weekends (Friday and Saturday) and during high season as well for groups of less than 10 people, the regular overnight rates apply.

Hotel rooms

The hotel is equipped with 39 hotel rooms and offers a capacity for a maximum of 85 people. The room categories are divided between the main building, the chalet and the stone house.

in the main building

- 2 single rooms with shower/toilet, radio-TV and telephone
- 4 family rooms with double and bunked bed, shower/toilet, radio-TV and telephone
- 13 double rooms with shower/toilet, radio-TV and telephone

in the chalet

- 6 double rooms with shower/toilet, radio-TV and telephone
- 2 double rooms with grandlit sized beds, private shower/toilet on the floor, radio-TV and telephone

in the stone house

- 12 double rooms with shower/toilet, radio-TV and telephone



Photo: The Fotostudio



Photo: The Fotostudio



Photo: Cramarts by Marc Lüthi

Kitchen philosophy

Roman Crkon's field, forest and meadow cuisine is a real labour of love! With 15 Gault Millau points, his kitchen is a feast for all the senses. Here, he offers guests a genuine and authentic culinary experience.

Have a look at our aperitif and menu recommendations where you will find a wide range of delicacies.

Upon request, our chef de cuisine will prepare a personalized menu for you.

Banquet rooms

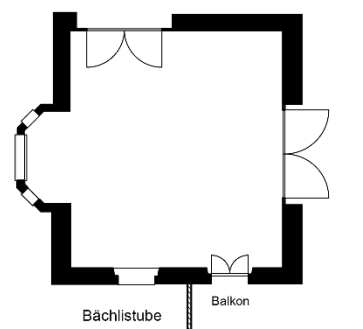
Bächlistube

Thanks to its many windows, our Bächlistube is flooded with daylight. This makes it an inviting atmosphere for drinks or sumptuous banqueting.



Photo: davidbirri photography

height	wide	length	m2	banquet
2.8	5.7	6.4	37	25



round	aperitif (standing)
25	30

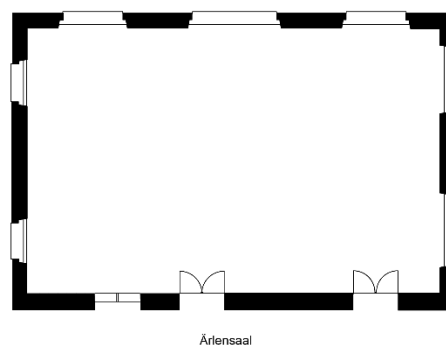
Ärlensaal

The Ärlensaal offers space for up to 80 people. The hall is the perfect setting for stylish banqueting and lively celebrations.



Photo: The Fotostudio

height	wide	length	m2	banquet
2.8	8.0	13.7	111	70



round	aperitif (standing)
80	150

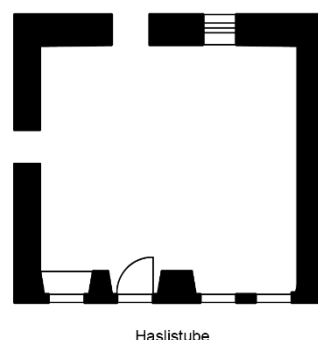
Haslistube

In our traditional Haslistube, you can sample some of the delicacies from our kitchen, which focuses on field, forest and meadow cuisine.



Photo: Cramarts by Marc Lüthi

height	wide	length	m2	banquet
2.5	6.8	5.9	40	30



round	aperitif (standing)
20	35

HISTORIC ALPINE HOTEL GRIMSEL HOSPIZ



Photo: davidbirri photography

General information

Address	Hotel location: Historisches Alpinhotel Grimsel Hospiz Am Grimselpass 3864 Guttannen	Postal address: Kraftwerke Oberhasli AG / Grimselhotels Grimselstrasse 19 3862 Innertkirchen
Travel	<p>By car</p> <p>When travelling from Bern or Lucerne, head towards Meiringen and further on to Innertkirchen. Then follow the pass road until just below Grimsel Pass. Cross the Seeuferegg dam on your right and drive the last stretch of road up to Grimselnollen.</p> <p>If travelling from Valais, you can reach us via Gletsch in Oberwald, all the way along the pass road up to the Grimsel Pass. Then drive around 5 minutes further towards Innertkirchen. Cross the Seeuferegg dam on your left and drive the last stretch of road up to Grimselnollen.</p> <p>By public transport</p> <p>If you are travelling by public transport, you can reach us by PostBus from Innertkirchen and Oberwald. The PostBus stop "Grimsel Hospiz" is right outside our entrance. Please check the current timetable before travelling.</p>	
Season	Beginning of June until end of October	
Contact	Feel free to contact us if you have any questions or are unsure about anything. Please contact us in advance to arrange a tour.	
	We would be happy to answer your phone or email enquiries. +41 (0)33 982 26 14 events@grimselwelt.ch	

Overnight stay

The historic four-star alpine hotel sits majestically above Lake Grimsel. Behind a homely façade of rough broken granite and red shutters, you will find an interior that leaves nothing to be desired.

Our offer:

- overnight stay in a cozy room with shower/toilet, radio-TV and telephone
- generous breakfast buffet from 7.30 a.m. until 10 a.m.
- free Wi-Fi
- services and VAT, exclusive taxes

Price per person in a double room, mountain view	from CHF 112.00
Price per person in a double room, lake view	from CHF 142.00
Price per person in a single room, mountain view	from CHF 142.00
Supplement for a double room for single use	CHF 60.00

These prices are valid for a minimum of 10 participants and can only be booked in combination with dinner. On weekends (Friday and Saturday) and during high season as well for groups of less than 10 people, the regular overnight rates apply.

Hotel rooms

The hotel provides 28 rooms, designed tastefully and inspired by the 1930s. All rooms offer an impressive view of the surrounding mountains.

- 2 single rooms with mountain view, shower/toilet, radio-TV and telephone
- 7 double rooms with lake view, shower/toilet, radio-TV and telephone
- 19 double rooms with mountain view, shower/toilet, radio-TV and telephone



Photo: The Fotostudio



Photo: The Fotostudio



Photo: davidbirri photography

Kitchen philosophy

The kitchen philosophy is in line with the hotel – high quality, genuine and authentic. At the Historic Alpine Hotel Grimsel Hospiz, meals are prepared with love and dedication to details. Everything is made with genuine craftsmanship. Regional products are presented at their best and refined with flavours from the wide world of culinary arts.

First impressions can be found in our menu recommendations where you can compose the perfect menu for you and your event. Alternatively, our chef de cuisine might prepare a personalized menu recommendation for you.

Banquet rooms

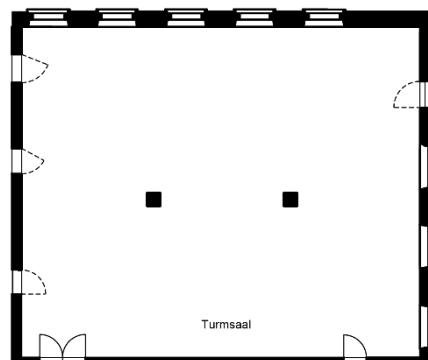
Turmsaal

The perfect hall for virtually every event. The Turmsaal is ideally suited to banqueting or for lively celebrations.



Photo: davidbirri photography

height	wide	length	m2	banquet
2.7	11.9	14.2	170	120



round	aperitif (standing)
-	200

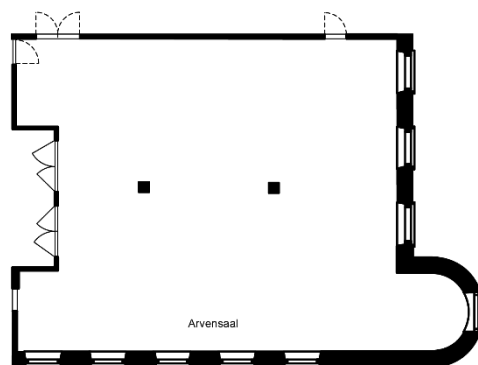
Arvensaal

The authentic Arvensaal with its cosy fireplace is a perfect setting for festive celebrations, drinks and dining in private or as part of an event.



Photo: The Fotostudio

height	wide	length	m2	banquet
2.7	12.0	14.2	172	80



round	aperitif (standing)
-	200

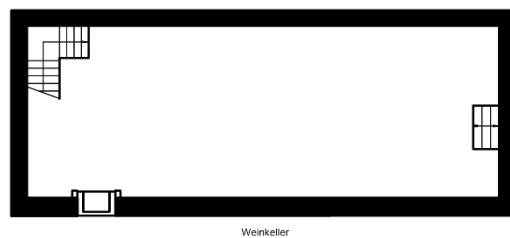
Felsenkeller – wine cellar

The doors to our wine cellar are always open on request, whether for business drinks, an exclusive wine tasting or a small-scale celebration in special surroundings.



Photo: The Fotostudio

height	wide	length	m2	banquet
2.0	3.3	16.3	55	-



round	aperitif (standing)
-	60

EXCLUSIVITY – RENT A HOTEL

Would you like to celebrate your birthday, anniversary or occasion exclusively and in a very personal setting?

We offer to rent the Hotel and Nature Resort Handeck as well the Historic Alpine Hotel Grimsel Hospiz exclusively for you and your guests.

Hotel and Nature Resort Handeck

The following services are included in our offer:

- exclusivity from 4 p.m. to 8 a.m. the following day
- overnight stay in a cozy room with shower/toilet, radio-TV and telephone
- generous breakfast buffet
- entry to our cozy wellbeing facility
- organization and support by the banquet and event department
- services and VAT, exclusive taxes

Exclusive rental:

weekdays

weekends / high season

entire Hotel and Nature Resort
for maximum 85 people

CHF 11'100.00*

CHF 12'900.00*

only main building and stone house
for maximum 69 people

CHF 9'400.00*

CHF 10'800.00*

only main building and chalet
for maximum 61 people

CHF 8'300.00*

CHF 9'500.00*

only main building
for maximum 45 people

CHF 6'200.00*

CHF 7'000.00*

Historic Alpine Hotel Grimsel Hospiz

The following services are included in our offer:

- exclusivity from 4 p.m. to 8 a.m. the following day
- overnight stay in a cozy room with shower/toilet, radio-TV and telephone
- generous breakfast buffet
- organization and support by the banquet and event department
- services and VAT, exclusive taxes

Exclusive rental:

weekdays

weekends / high season

entire Historic Alpine Hotel Grimsel Hospiz
for maximum 54 people

CHF 8'100.00*

CHF 9'900.00*

**Please note that these prices do not include any consumption yet.*



Photo: davidbirri photography



Photo: davidbirri photography



Photo: davidbirri photography

INFORMATION ABOUT CONSTRUCTIONS SPITALLAMM DAM

By 2025, a once-in-a-century structure will have been built in front of the Grimsel Hospiz Alpine Hotel. A new, replacement dam wall is to be built in front of the existing Spitallamm dam wall with a view to managing Lake Grimsel for another 100 years. It represents a significant investment and will help ensure a reliable energy supply for Switzerland. A construction project in the mountains – almost 2,000 m above sea level and on this scale – is a very challenging proposition and asks a great deal of those working on it. The free and informative site tour gives you an opportunity to inspect the construction activity at close hand.

The construction work involved is scheduled for the same period each year, namely spring to late autumn, and is associated with noise emissions both day and night (a shift system is in operation). We are aware that our major construction project has an impact on the running of the hotel and on our guests during the summer season. Together with our hotel team, we put our heart and soul into making sure you enjoy your stay with us and thank you for your understanding!

SUPPORTING PROGRAMME AT GRIMSELWELT

The Grimselwelt – known as Switzerland's reservoir – offers countless possibilities for excursions. Eternal ice is a fascinating prospect for young and old alike. The paths where tradesmen used to carry their goods are now perfect for long hikes. On the Gelmerbahn, you can experience a dizzying gradient of 106 per cent. And we are also on hand to tell you everything there is to know on the topic of electricity, travelling through the twisting underground labyrinth at the Oberhasli power plants and exploring a crystal grotto that is millions of years old.

We would be happy to put together a personal programme for your trip to the Grimselwelt – please get in touch with us. The programme and detailed booking documents will be sent to you directly.

Additional information about the offers and other activities can be found on our website www.grimselwelt.ch.



Photo: davidbirri photography

CONDITIONS

Please note that our general terms and conditions are an integrated part of all our offers and confirmations.

(Edit: January 2024)



WE LOOK FORWARD TO SEEING YOU!

GRIMSELWELT
Grimselstrasse 19
CH-3862 Innertkirchen
welcome@grimselwelt.ch
www.grimselwelt.ch

GRIMSELHOTELS
hotels@grimselwelt.ch
events@grimselwelt.ch

Handeck
Hotel und Naturresort
CH-3864 Guttannen
Tel +41 33 982 36 11

Grimsel Hospiz
Historisches Alpinhotel
CH-3864 Guttannen
Tel +41 33 982 46 11

Oberaar
Restaurant und Berghaus
CH-3864 Guttannen
Tel +41 33 982 48 11

Bäregg
Ferien- und Alpinhütte
CH-3864 Guttannen
Tel +41 33 982 36 11

